

# DTH HAMMER 8"

DESCO INC. is at your solution and service.

Desco Inc.(HQ/Manufacturer)

HEAD OFFICE: 1240-1, Ok-Dong, Gwangsan, Gwangju, Korea

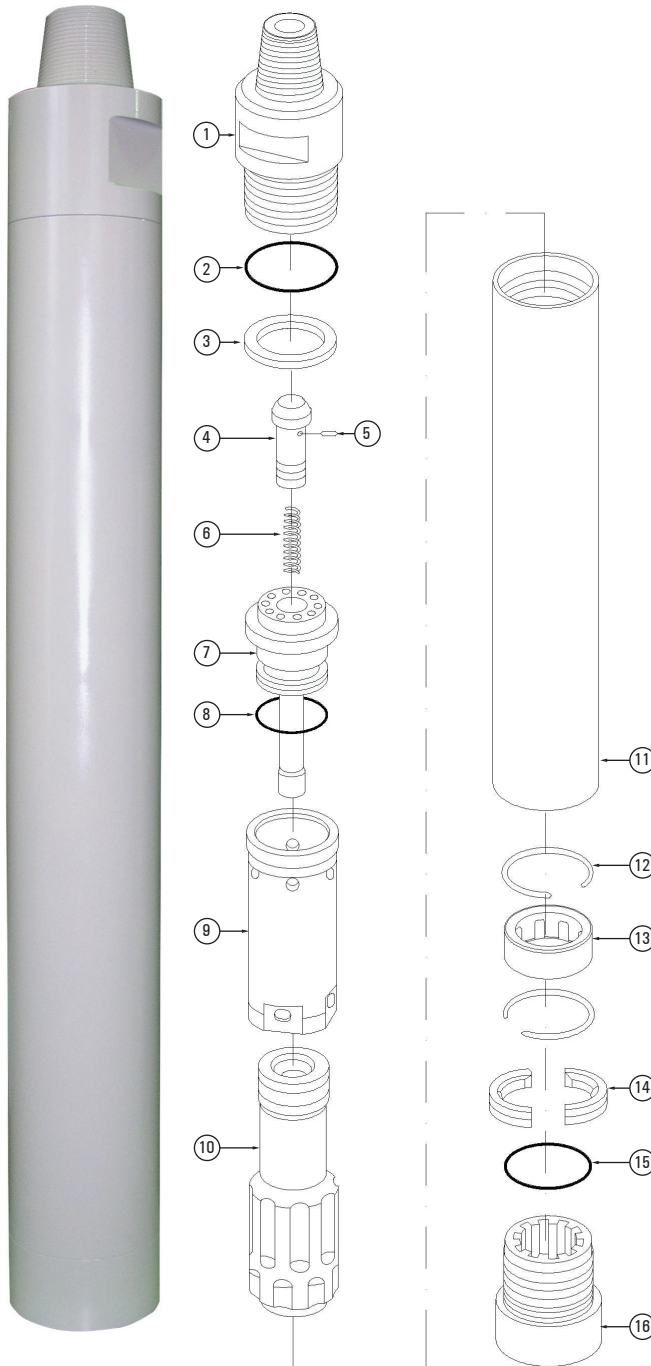
TEL : 82.62.952.4564 / FAX : 82.62.953.1593

EXPORT DIVISION

2607 jidong, Lottecastle, 76, Soongin-Dong, Jongno-Gu, Seoul, Korea

TEL : 82-2-3670 6400 / FAX : 82-2-3670 6399

E-mail : desco@desco-inc.com



## MODEL ACE80 SHANK TYPE DHD380

No	Part Name	Part No
1	Back head	8.0A-01
2	B.H. O-ring	8.0A-01-1
3	Make-up ring(urethane)	8.0A-04-1
4	Check valve	8.0A-06
5	Chock	8.0A-06-1
6	C.V spring	8.0A-06-2
7	Air distributor	8.0A-08
8	A.D. O-ring	8.0A-08-1
9	Inner cylinder	8.0A-10
10	Piston	8.0A-11
11	Case	8.0A-12
12	Piston retainer ring	8.0A-11-1
13	Bearing	8.0A-14
14	Bit. retainer ring	8.0A-19
15	Bit. ret. O-ring	8.0A-19-1
16	Chuck	8.0A-20

### SPECIFICATION

DTH Hammer	8" Hammer
Backhead Thread	API 4*1/2 REG. Pin
Length	1,310mm
Outside Diameter	Dia. 182mm
Weight	184kg
Shank Type	DHD380, SD8, QL80

### AIR CONSUMPTION CHART

150 PSI (10.5bar)	610CFM
250 PSI (17.5bar)	1070CFM
350 PSI (21bar)	1600CFM

### Notice

The specification & drawing is based on IR shank.  
So, Inner parts & specification can be different as the type of the other shanks.

# DTH HAMMER 8"

DESCO INC. is at your solution and service.

Desco Inc.(HQ/Manufacturer)

HEAD OFFICE: 1240-1, Ok-Dong, Gwangsan, Gwangju, Korea

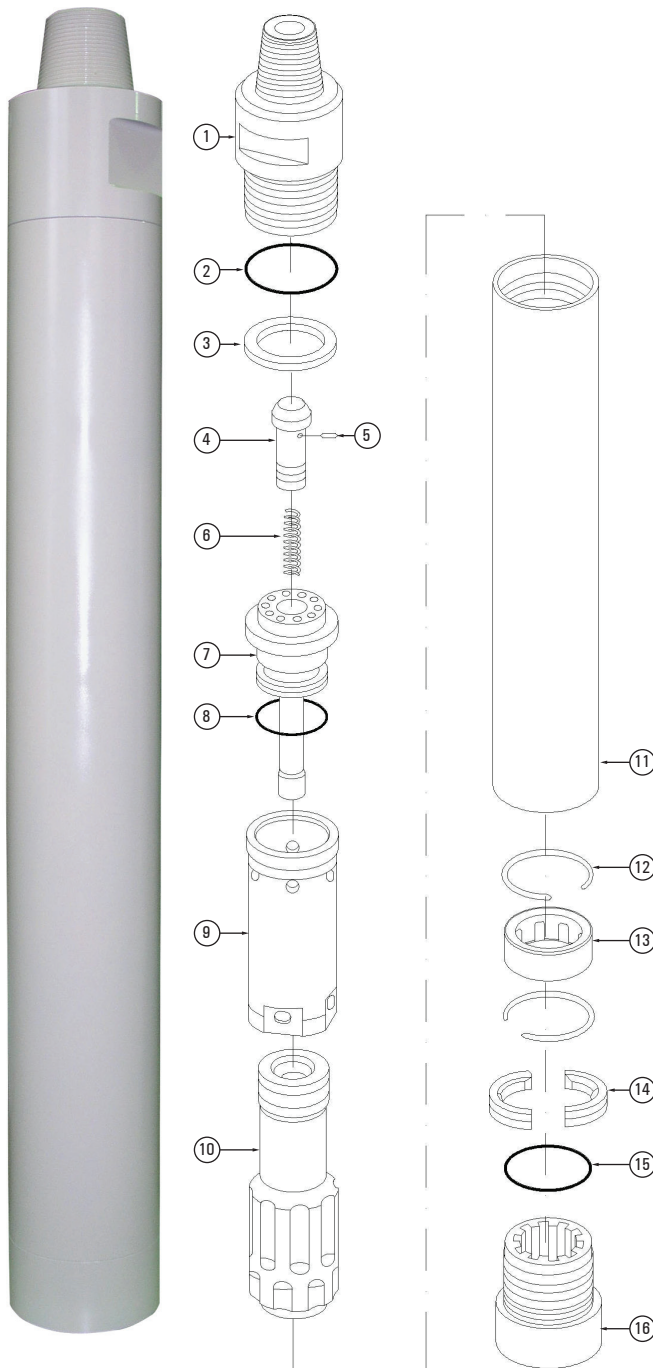
TEL : 82.62.952.4564 / FAX : 82.62.953.1593

EXPORT DIVISION

2607 jidong, Lottecastle, 76, Soongin-Dong, Jongno-Gu, Seoul, Korea

TEL : 82-2-3670 6400 / FAX : 82-2-3670 6399

E-mail : desco@desco-inc.com



## MODEL ACE80 SHANK TYPE QL80

No	Part Name	Part No
1	Back head	8.0A-01
2	B.H. O-ring	8.0A-01-1
3	Make-up ring(urethane)	8.0A-04-1
4	Check valve	8.0A-06
5	Chock	8.0A-06-1
6	C.V spring	8.0A-06-2
7	Air distributor	8.0A-08
8	A.D. O-ring	8.0A-08-1
9	Inner cylinder	8.0A-10
10	Piston	8.0A-11(Q)
11	Case	8.0A-12(Q)
12	Piston retainer ring	8.0A-11-1
13	Bearing	8.0A-14(Q)
14	Bit. retainer ring	8.0A-19(Q)
15	Bit. ret. O-ring	8.0A-19-1
16	Chuck	8.0A-20(Q)

### SPECIFICATION

DTH Hammer	8" Hammer
Backhead Thread	API 4*1/2 REG. Pin
Length	1,310mm
Outside Diameter	Dia. 182mm
Weight	184kg
Shank Type	DHD380, SD8, QL80

### AIR CONSUMPTION CHART

150 PSI (10.5bar)	610CFM
250 PSI (17.5bar)	1070CFM
350 PSI (21bar)	1600CFM

### Notice

The specification & drawing is based on IR shank.  
So, Inner parts & specification can be different as the type of the other shanks.

# DTH HAMMER 8"

DESCO INC. is at your solution and service.

Desco Inc.(HQ/Manufacturer)

HEAD OFFICE: 1240-1, Ok-Dong, Gwangsan, Gwangju, Korea

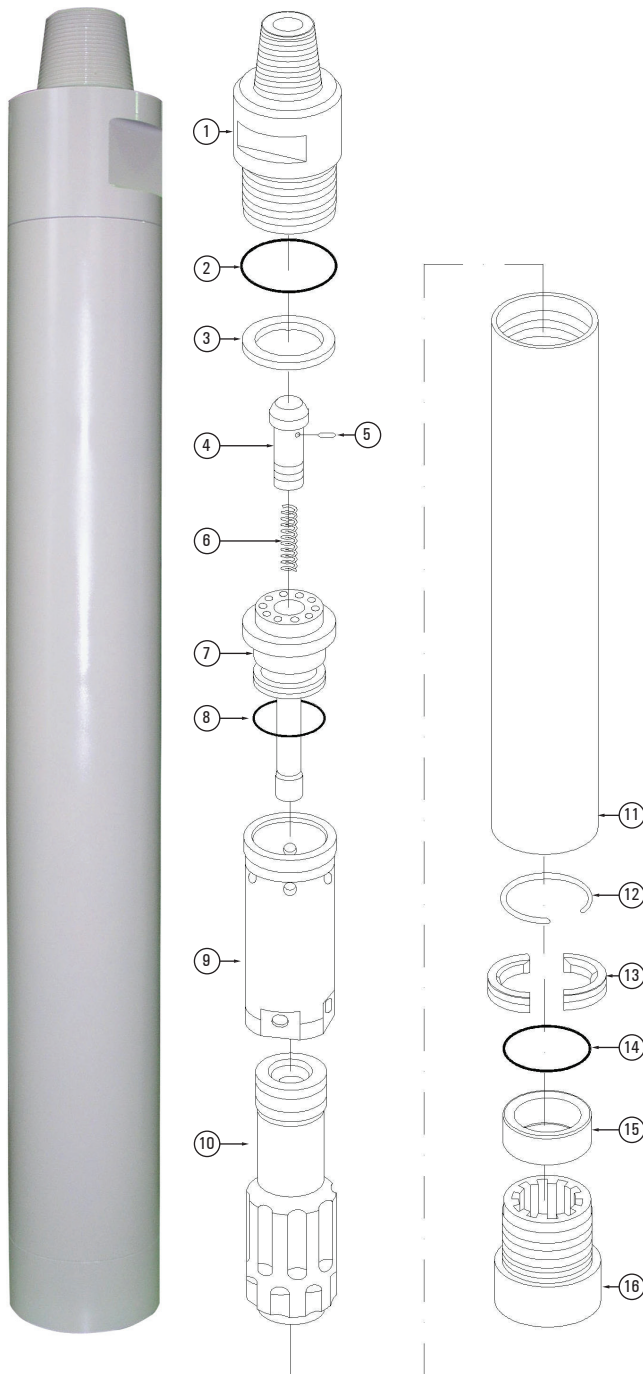
TEL : 82.62.952.4564 / FAX : 82.62.953.1593

EXPORT DIVISION

2607 jidong, Lottecastle, 76, Soongin-Dong, Jongno-Gu, Seoul, Korea

TEL : 82-2-3670 6400 / FAX : 82-2-3670 6399

E-mail : desco@desco-inc.com



## MODEL ACE80 SHANK TYPE SD8

No	Part Name	Part No
1	Back head	8.0A-01
2	B.H. O-ring	8.0A-01-1
3	Make-up ring(urethane)	8.0A-04-1
4	Check valve	8.0A-06
5	Chock	8.0A-06-1
6	C.V spring	8.0A-06-2
7	Air distributor	8.0A-08
8	A.D. O-ring	8.0A-08-1
9	Inner cylinder	8.0A-10
10	Piston	8.0A-11(S)
11	Case	8.0A-12(S)
12	Piston retainer ring	8.0A-11-1
13	Bearing	8.0A-14(S)
14	Bit. retainer ring	8.0A-19(S)
15	Bit. ret. O-ring	8.0A-19-1
16	Chuck	8.0A-20(S)

### SPECIFICATION

DTH Hammer	8" Hammer
Backhead Thread	API 4*1/2 REG. Pin
Length	1,310mm
Outside Diameter	Dia. 182mm
Weight	184kg
Shank Type	DHD380, SD8, QL80

### AIR CONSUMPTION CHART

150 PSI (10.5bar)	610CFM
250 PSI (17.5bar)	1070CFM
350 PSI (21bar)	1600CFM

### Notice

The specification & drawing is based on IR shank.  
So, Inner parts & specification can be different as the type of the other shanks.