

DTH HAMMER 6"

DESCO INC. is at your solution and service.

Desco Inc.(HQ/Manufacturer)

HEAD OFFICE: 1240-1, Ok-Dong, Gwangsan, Gwangju, Korea

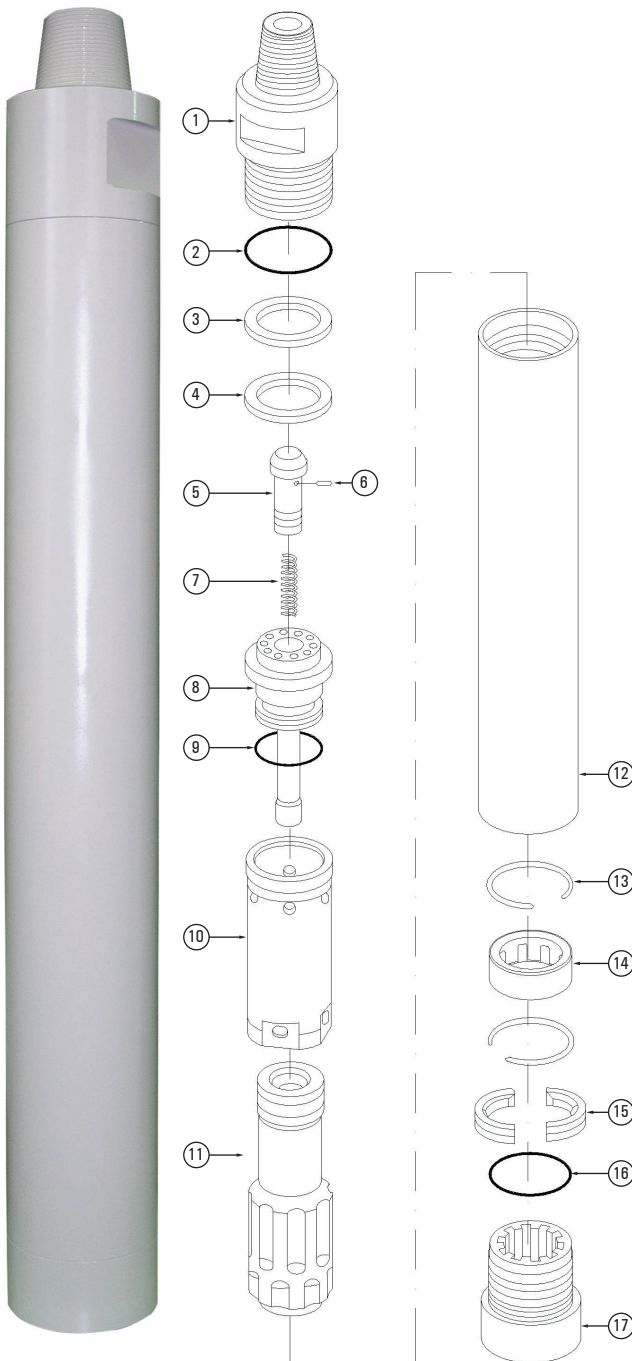
TEL : 82.62.952.4564 / FAX : 82.62.953.1593

EXPORT DIVISION

2607 jidong, Lottecastle, 76, Soongin-Dong, Jongno-Gu, Seoul, Korea

TEL : 82-2-3670 6400 / FAX : 82-2-3670 6399

E-mail : desco@desco-inc.com



MODEL ACE60 SHANK TYPE DHD360

No	Part Name	Part No
1	Back head	6.0A-01
2	B.H. O-ring	6.0A-01-1
3	Space ring	6.0A-03-1
4	Make-up ring(urethane)	6.0A-04-1
5	Check valve	6.0A-06
6	Chock	6.0A-06-1
7	C.V spring	6.0A-06-2
8	Air distributor	6.0A-08
9	A.D. O-ring	6.0A-08-1
10	Inner cylinder	6.0A-10
11	Piston	6.0A-11
12	Case	6.0A-12
13	Piston retainer ring	6.0A-11-1
14	Bearing	6.0A-14
15	Bit. retainer ring	6.0A-19
16	Bit. ret. O-ring	6.0A-19-1
17	Chuck	6.0A-20

SPECIFICATION

DTH Hammer	6" Hammer
Backhead Thread	API 3*1/2 REG. Pin
Length	921mm
Outside Diameter	Dia. 142mm
Weight	79kg
Shank Type	DHD360, SD6, QL60

AIR CONSUMPTION CHART

150 PSI (10.5bar)	390CFM
250 PSI (17.5bar)	710CFM
350 PSI (24.5bar)	1020CFM

Notice

The specification & drawing is based on IR shank.
So, Inner parts & specification can be different as the type of the other shanks.

DTH HAMMER 6"

DESCO INC. is at your solution and service.

Desco Inc.(HQ/Manufacturer)

HEAD OFFICE: 1240-1, Ok-Dong, Gwangsan, Gwangju, Korea

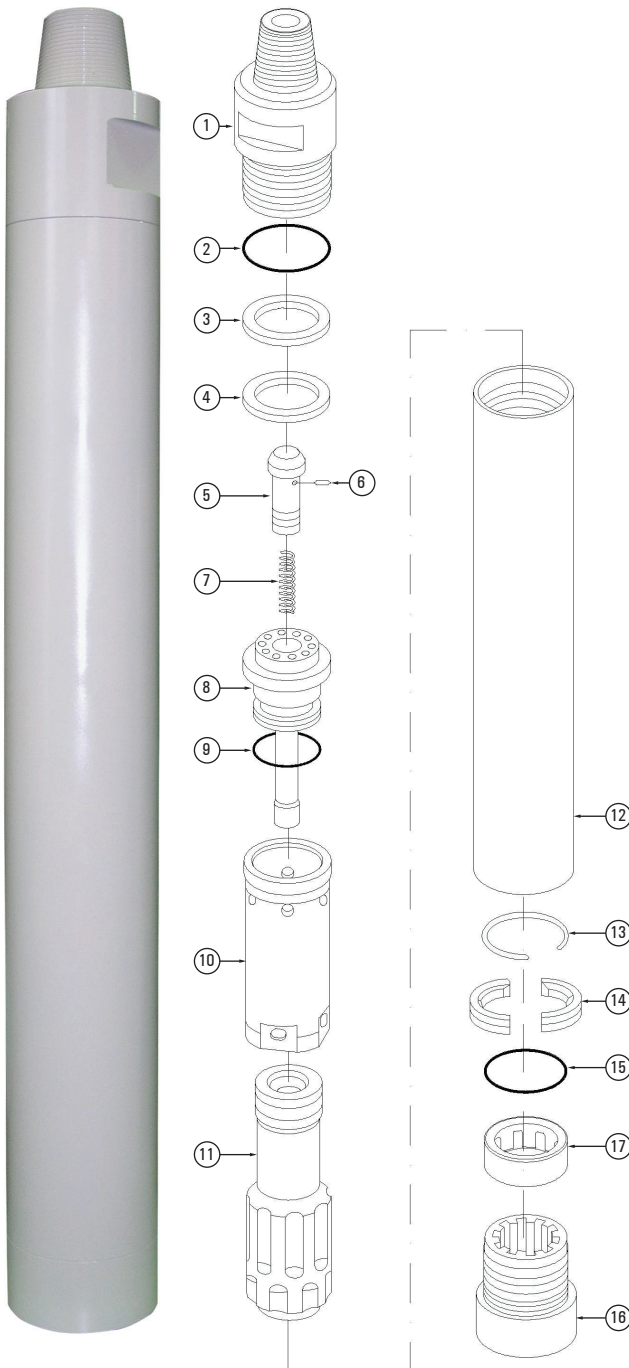
TEL : 82.62.952.4564 / FAX : 82.62.953.1593

EXPORT DIVISION

2607 jidong, Lottecastle, 76, Soongin-Dong, Jongno-Gu, Seoul, Korea

TEL : 82-2-3670 6400 / FAX : 82-2-3670 6399

E-mail : desco@desco-inc.com



MODEL ACE60 SHANK TYPE QL60

No	Part Name	Part No
1	Back head	6.0A-01
2	B.H. O-ring	6.0A-01-1
3	Space ring	6.0A-03-1
4	Make-up ring(urethane)	6.0A-04-1
5	Check valve	6.0A-06
6	Chock	6.0A-06-1
7	C.V spring	6.0A-06-2
8	Air distributor	6.0A-08
9	A.D. O-ring	6.0A-08-1
10	Inner cylinder	6.0A-10
11	Piston	6.0A-11
12	Case	6.0A-12(Q)
13	Piston retainer ring	6.0A-11-1
14	Bearing	6.0A-14(Q)
15	Bit. retainer ring	6.0A-19(Q)
16	Bit. ret. O-ring	6.0A-19-1
17	Chuck	6.0A-20(Q)

SPECIFICATION

DTH Hammer	6" Hammer
Backhead Thread	API 3*1/2 REG. Pin
Length	921mm
Outside Diameter	Dia. 142mm
Weight	79kg
Shank Type	DHD360, SD6, QL60

AIR CONSUMPTION CHART

150 PSI (10.5bar)	390CFM
250 PSI (17.5bar)	710CFM
350 PSI (24.5bar)	1020CFM

Notice

The specification & drawing is based on IR shank.
So, Inner parts & specification can be different as the type of the other shanks.

DTH HAMMER 6"

DESCO INC. is at your solution and service.

Desco Inc.(HQ/Manufacturer)

HEAD OFFICE: 1240-1, Ok-Dong, Gwangsan, Gwangju, Korea

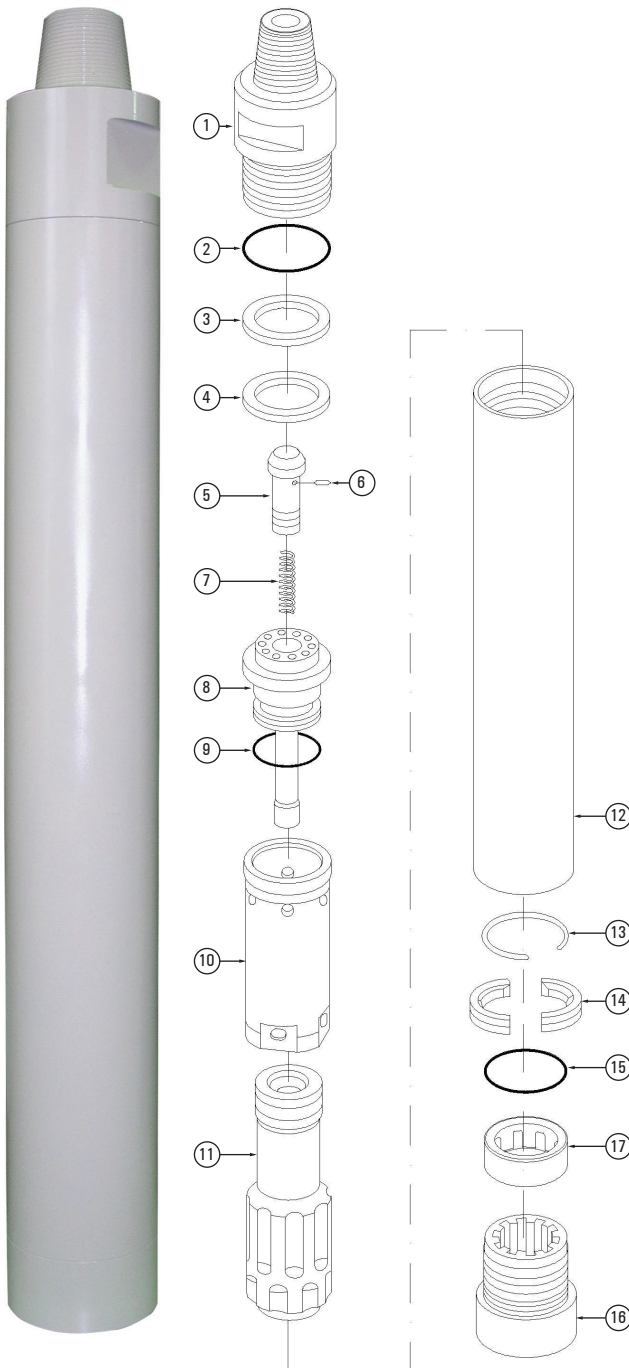
TEL : 82.62.952.4564 / FAX : 82.62.953.1593

EXPORT DIVISION

2607 jidong, Lottecastle, 76, Soongin-Dong, Jongno-Gu, Seoul, Korea

TEL : 82-2-3670 6400 / FAX : 82-2-3670 6399

E-mail : desco@desco-inc.com



MODEL ACE60 SHANK TYPE SD6

No	Part Name	Part No
1	Back head	6.0A-01
2	B.H. O-ring	6.0A-01-1
3	Space ring	6.0A-03-1
4	Make-up ring(urethane)	6.0A-04-1
5	Check valve	6.0A-06
6	Chock	6.0A-06-1
7	C.V spring	6.0A-06-2
8	Air distributor	6.0A-08
9	A.D. O-ring	6.0A-08-1
10	Inner cylinder	6.0A-10
11	Piston	6.0A-11
12	Case	6.0A-12
13	Piston retainer ring	6.0A-11-1
14	Bearing	6.0A-19
15	Bit. retainer ring	6.0A-19-1
16	Bit. ret. O-ring	6.0A-14(S)
17	Chuck	6.0A-20

SPECIFICATION

DTH Hammer	6" Hammer
Backhead Thread	API 3*1/2 REG. Pin
Length	921mm
Outside Diameter	Dia. 142mm
Weight	79kg
Shank Type	DHD360, SD6, QL60

AIR CONSUMPTION CHART

150 PSI (10.5bar)	390CFM
250 PSI (17.5bar)	710CFM
350 PSI (24.5bar)	1020CFM

Notice

The specification & drawing is based on IR shank.
So, Inner parts & specification can be different as the type of the other shanks.