

# DTH HAMMER 4"

DESCO INC. is at your solution and service.

Desco Inc.(HQ/Manufacturer)

HEAD OFFICE: 1240-1, Ok-Dong, Gwangsan, Gwangju, Korea

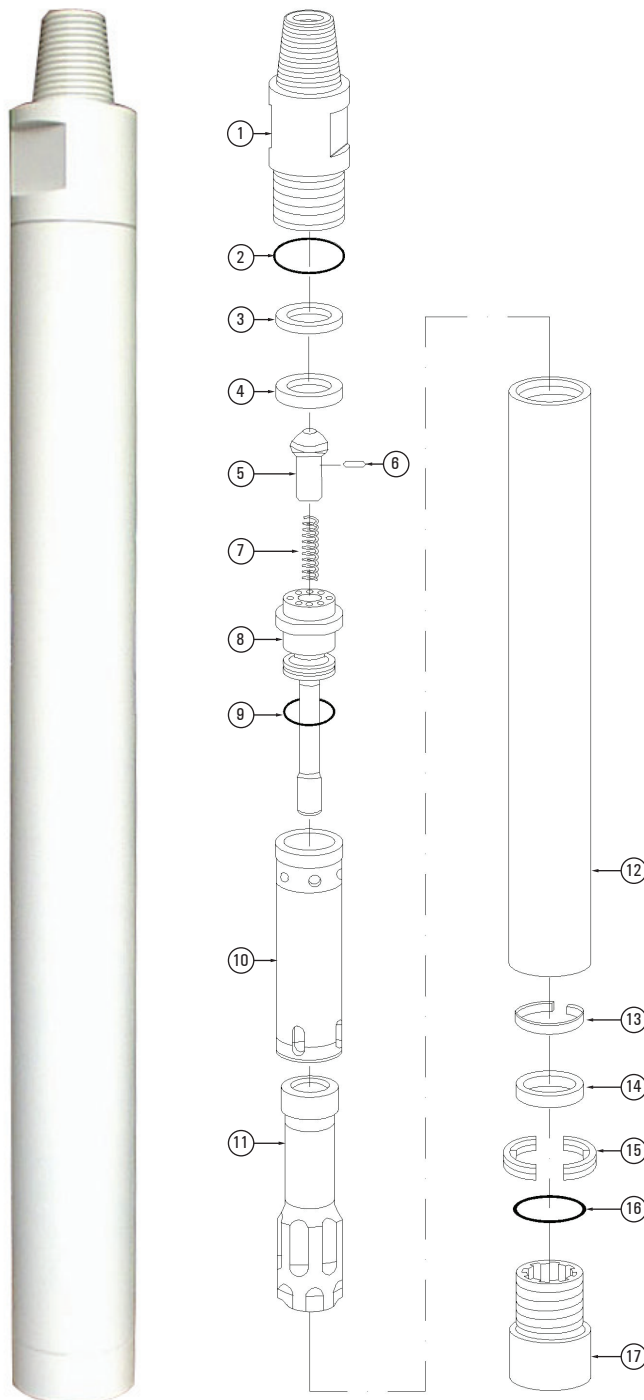
TEL : 82.62.952.4564 / FAX : 82.62.953.1593

EXPORT DIVISION

2607 jidong, Lottecastle, 76, Soongin-Dong, Jongno-Gu, Seoul, Korea

TEL : 82-2-3670 6400 / FAX : 82-2-3670 6399

E-mail : desco@desco-inc.com



## MODEL ACE40 SHANK TYPE DHD340

No	Part Name	Part No
1	Back head	4.OA-01
2	B.H. O-ring	4.OA-01-1
3	Space ring	4.OA-03-1
4	Make-up ring(urethane)	4.OA-04-1
5	Check valve	4.OA-06
6	Chock	4.OA-06-1
7	C.V spring	4.OA-06-2
8	Air distributor	4.OA-08
9	A.D. O-ring	4.OA-08-1
10	Inner cylinder	4.OA-10
11	Piston	4.OA-11
12	Case	4.OA-12
13	Piston retainer ring	4.OA-11-1
14	Bearing	4.OA-14
15	Bit. retainer ring	4.OA-19
16	Bit. ret. O-ring	4.OA-19-1
17	Chuck	4.OA-20

### SPECIFICATION

DTH Hammer	4" Hammer
Backhead Thread	API 2*3/8 REG. Pin
Length	925mm
Outside Diameter	Dia. 98mm
Weight	38kg
Shank Type	DHD340, SD4, QL40

### AIR CONSUMPTION CHART

150 PSI (10.5bar)	200CFM
250 PSI (17.5bar)	365CFM
350 PSI (24.5bar)	535CFM

### Notice

The specification & drawing is based on IR shank.  
So, Inner parts & specification can be different as the type of the other shanks.

# DTH HAMMER 4"

DESCO INC. is at your solution and service.

Desco Inc.(HQ/Manufacturer)

HEAD OFFICE: 1240-1, Ok-Dong, Gwangsan, Gwangju, Korea

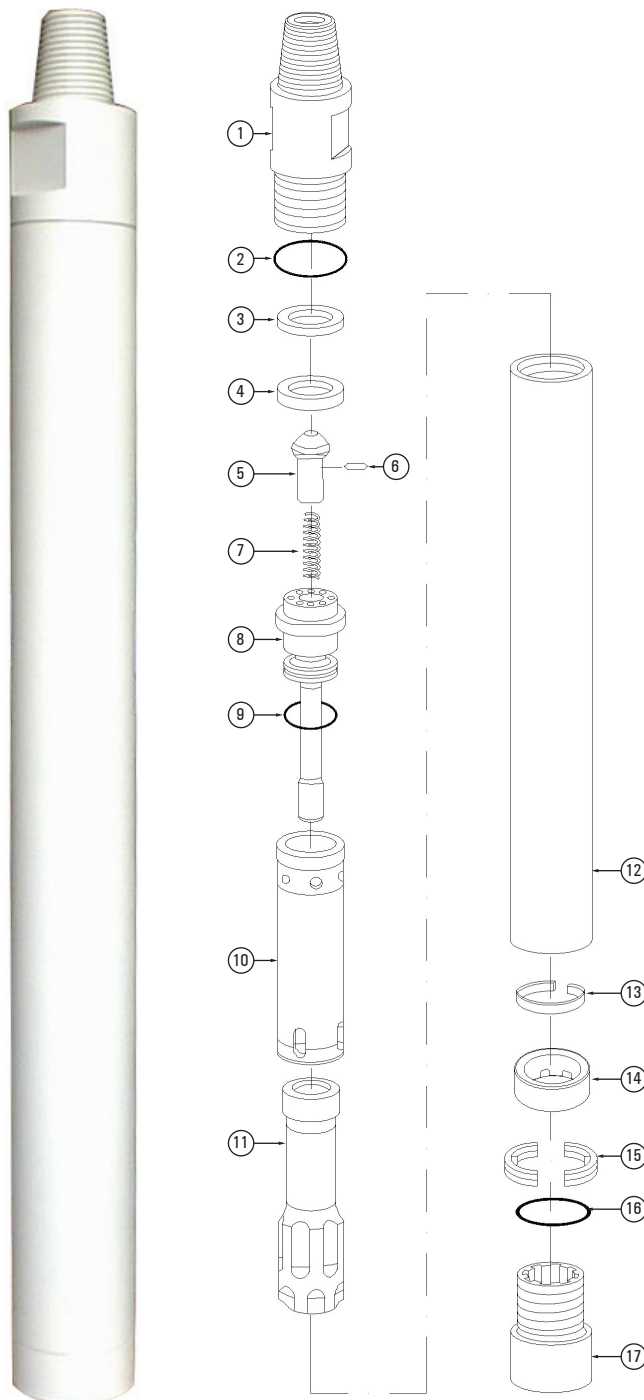
TEL : 82.62.952.4564 / FAX : 82.62.953.1593

EXPORT DIVISION

2607 jidong, Lottecastle, 76, Soongin-Dong, Jongno-Gu, Seoul, Korea

TEL : 82-2-3670 6400 / FAX : 82-2-3670 6399

E-mail : desco@desco-inc.com



## MODEL ACE40 SHANK TYPE QL40

No	Part Name	Part No
1	Back head	4.OA-01
2	B.H. O-ring	4.OA-01-1
3	Space ring	4.OA-03-1
4	Make-up ring(urethane)	4.OA-04-1
5	Check valve	4.OA-06
6	Chock	4.OA-06-1
7	C.V spring	4.OA-06-2
8	Air distributor	4.OA-08
9	A.D. O-ring	4.OA-08-1
10	Inner cylinder	4.OA-10
11	Piston	4.OA-11
12	Case	4.OA-12(Q)
13	Piston retainer ring	4.OA-11-1
14	Bearing	4.OA-14(Q)
15	Bit. retainer ring	4.OA-19(Q)
16	Bit. ret. O-ring	4.OA-19-1
17	Chuck	4.OA-20(Q)

### SPECIFICATION

DTH Hammer	4" Hammer
Backhead Thread	API 2*3/8 REG. Pin
Length	925mm
Outside Diameter	Dia. 98mm
Weight	38kg
Shank Type	DHD340, SD4, QL40

### AIR CONSUMPTION CHART

150 PSI (10.5bar)	200CFM
250 PSI (17.5bar)	365CFM
350 PSI (24.5bar)	535CFM

### Notice

The specification & drawing is based on IR shank.  
So, Inner parts & specification can be different as the type of the other shanks.

# DTH HAMMER 4"

DESCO INC. is at your solution and service.

Desco Inc.(HQ/Manufacturer)

HEAD OFFICE: 1240-1, Ok-Dong, Gwangsan, Gwangju, Korea

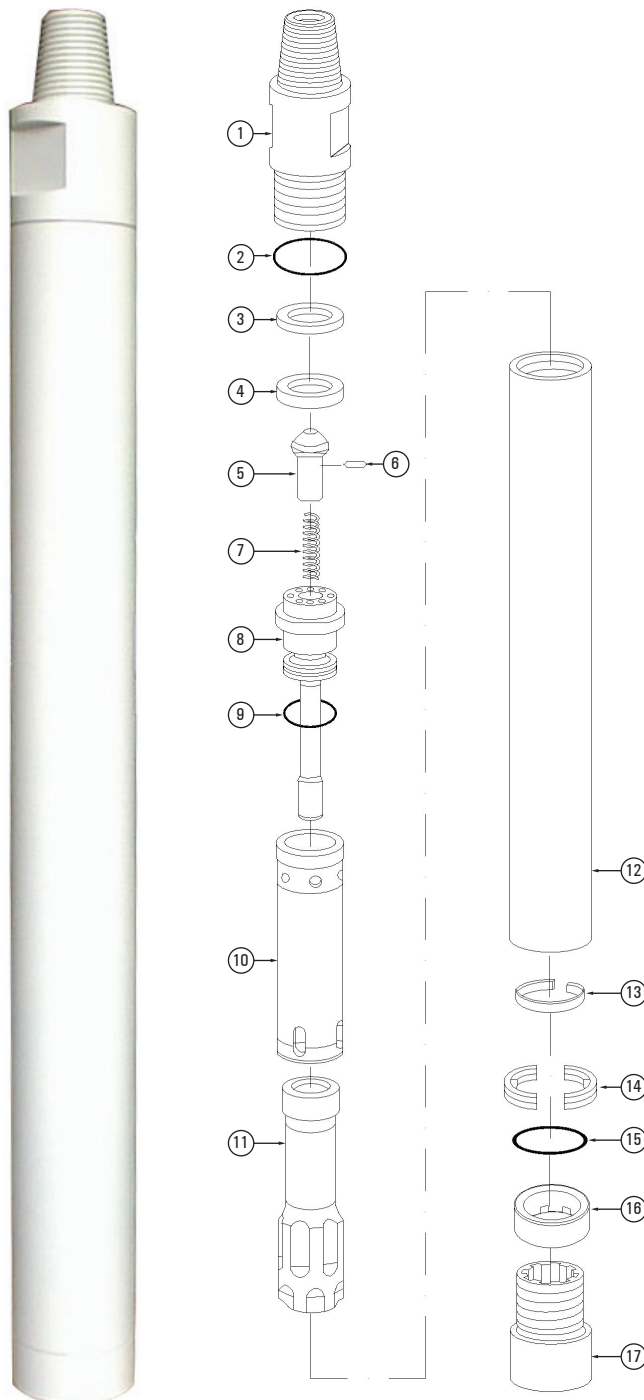
TEL : 82.62.952.4564 / FAX : 82.62.953.1593

EXPORT DIVISION

2607 jidong, Lottecastle, 76, Soongin-Dong, Jongno-Gu, Seoul, Korea

TEL : 82-2-3670 6400 / FAX : 82-2-3670 6399

E-mail : desco@desco-inc.com



## MODEL ACE40 SHANK TYPE SD4

No	Part Name	Part No
1	Back head	4.OA-01
2	B.H. O-ring	4.OA-01-1
3	Space ring	4.OA-03-1
4	Make-up ring(urethane)	4.OA-04-1
5	Check valve	4.OA-06
6	Chock	4.OA-06-1
7	C.V spring	4.OA-06-2
8	Air distributor	4.OA-08
9	A.D. O-ring	4.OA-08-1
10	Inner cylinder	4.OA-10
11	Piston	4.OA-11
12	Case	4.OA-12(S)
13	Piston retainer ring	4.OA-11-1
14	Bearing	4.OA-14(S)
15	Bit. retainer ring	4.OA-19(S)
16	Bit. ret. O-ring	4.OA-19-1
17	Chuck	4.OA-20(S)

### SPECIFICATION

DTH Hammer	4" Hammer
Backhead Thread	API 2*3/8 REG. Pin
Length	925mm
Outside Diameter	Dia. 98mm
Weight	38kg
Shank Type	DHD340, SD4, QL40

### AIR CONSUMPTION CHART

150 PSI (10.5bar)	200CFM
250 PSI (17.5bar)	365CFM
350 PSI (24.5bar)	535CFM

### Notice

The specification & drawing is based on IR shank.  
So, Inner parts & specification can be different as the type of the other shanks.